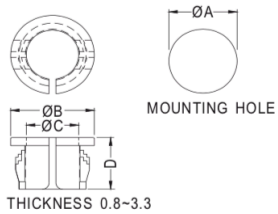


Snap bushings

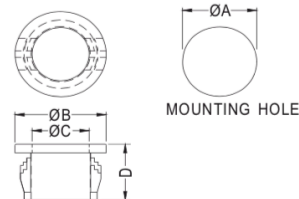
Material	Nylon 66 (UL)
Flameclass	94V-2
Color	Black
Unit	mm



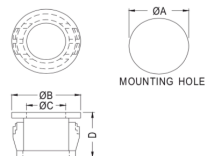
Part No	A	B	C	D	Package
2806 0000	12.7	15.0	9.7	9.8	1000
2806 0001	15.9	18.4	12.8	10.4	
2806 0002	19.0	20.7	15.1	10.4	



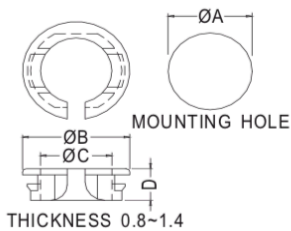
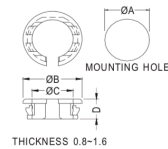
Part No	A	B	C	D	chassis thickness	Package
2806 0017	8.0	9.5	5.2	8.2	0.8-1.8	1000
2806 0018	9.5	12.0	6.6	10.3	0.8-3.3	
2806 0019	11.1	13.6	8.4	10.3	0.8-3.3	
2806 0020	13.0	15.1	9.8	10.3	0.8-3.3	
2806 0021	16.0	18.2	12.8	10.3	0.8-3.3	



Part No	A	B	C	D	chassis thickness	Package
2806 0036	19.0	21.5	14.3	11.3	0.8-3.3	200
2806 0037	22.2	25.1	18.6	11.2	0.8-3.3	200
2806 0038	22.2	23.8	19.0	6.3	0.8-1.6	100
2806 0039	25.4	27.8	19.4	10.8	0.8-3.3	
2806 0040	30.1	34.0	24.5	11.7	0.8-3.3	200
2806 0041	35.0	37.8	25.8	11.3	0.8-3.5	
2806 0042	34.2	38.0	26.2	11.5	1.0-3.1	
2806 0043	38.0	41.2	33.3	11.6	1.0-3.3	



Part No	A	B	C	D	Package
2806 0058	9.5	12.4	7.6	6.0	1000
2806 0059	12.7	16.8	10.8	7.3	
2806 0060	15.9	20.3	14.1	7.3	500
2806 0061	19.0	22.5	16.5	7.3	
2806 0062	22.0	26.0	20.0	7.3	
2806 0063	25.4	28.6	22.0	7.9	



Part No	A	B	C	D	Package
2806 0078	7.0	10.4	6.0	4.8	1000
2806 0079	12.7	16.2	10.8	5.2	
2806 0080	16.0	19.3	13.0	5.2	500
2806 0081	19.0	22.9	15.6	5.5	
2806 0082	21.0	25.0	19.0	5.6	
2806 0083	22.0	25.8	19.3	5.5	
2806 0084	23.0	26.4	20.4	5.5	
2806 0085	24.0	27.0	20.8	5.3	250
2806 0086	27.0	34.6	23.0	6.0	
2806 0087	29.0	34.0	26.3	7.0	500
2806 0088	32.0	36.9	30.0	6.7	